

# WINTER SPECIAL



## Contents

IB Calendar

Book Recommendation

How to Survive in the IB

Interview

The College Times

Article Contest

Fun Science

**GAELE TRILLIE**



2014-02

SUN	MON	TUE	WED	THU	FRI	SAT	SUN	MON	TUE	WED	THU	FRI	SAT
						1	2	3	4	5	6	7	8
9	10	11	12	13	14	15	16	17	18	19	20	21	22
23	24	25	26	27	28								

**January 1<sup>st</sup>**

New Year's Day

**January 15<sup>th</sup>**

Scholarship test for new students

**January 29<sup>th</sup> ~ February 1<sup>st</sup>**

Korean New Year Holiday

**February 12<sup>th</sup>**

Practice for graduation ceremony

**February 13<sup>th</sup>**

Graduation ceremony

**February 24<sup>rd</sup>**

Class start

2<sup>nd</sup> scholarship test for new students

**February 24<sup>rd</sup> ~ February 26<sup>th</sup>**

OT for new students

**February 25<sup>th</sup> ~ February 26<sup>th</sup>**

Collage entrance planning workshop

**February 28<sup>th</sup>**

Last day of classes, Students go home

Birthdays

**January 3<sup>rd</sup>**

Pre-DP Alex Kim

**January 4<sup>th</sup>**

DP1 Han Yu

**January 14<sup>th</sup>**

DP1 Kyung-min Cho

**January 16<sup>th</sup>**

Pre-DP Rebecca Choi

**February 14<sup>th</sup>**

Pre-DP Steve Koo

**February 17<sup>th</sup>**

DP1 Hyun-gu Seo

**February 27<sup>th</sup>**

Pre-DP Heun So

**Jiwoo Jung**

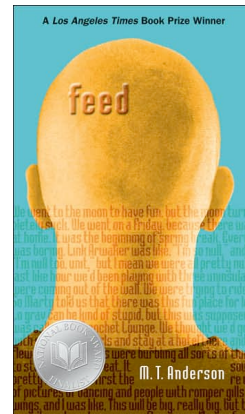
[jj2ooh@naver.com](mailto:jj2ooh@naver.com)



# BOOK RECOMMENDATION

It's Winter Vacation, and all students of GAFL have 2 months of their own time. It is really great time to develop ourselves or take a break for next semester. However, many students just stay in front of the desks and try to study. Or some of them go to the academies and spend whole day in there. During free time or weekends, students usually waste time as watching TV or sleeping, because the week was too tough and boring. Although studying is really important, it's what we always have to do during the semester. So how about put away those textbooks and instead, pick up novels today? Some may think "Ahhh, books! They are even more boring than textbooks and math equations!", but here are some book lists from Ms. Fountain, the school librarian. She has a great taste in books, so I can sure that you will like all of them. Books are food for you mind, hope you enjoy them!

will be made in the film soon! So you can guess how much the story is interesting, right?" – Summer Jiwoo Jeong



2) *Feed* by M.T Anderson



1) *Divergent Trilogy* by Veronica Roth



"If you liked the *Hunger Games* you may enjoy the *Divergent* trilogy. Follow Tris as she leaves everything that she knows behind to change factions. Once in her new home she learns that not everything is quite like it seems. In a faction that prides bravery above all else what happens when you don't feel brave?" – Ms. Fountain



"*Divergent Series* are one of the hottest books around the world now. Also it

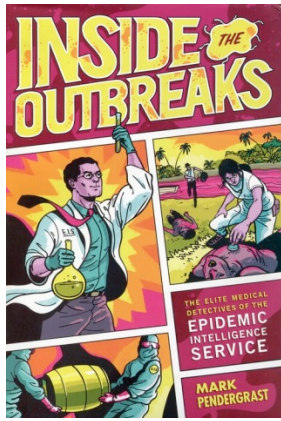


"We already depend heavily on our smart phones and computers. What if instead of using an object, each of us was plugged directly into the Feed. Need an answer? Look it up! Want to know the latest fashion or celebrity gossip? It is right there at the blink of an eye! Want to talk to your friend miles away? No problem! Sounds good right? But what's the catch? Find out in *Feed*." – Ms. Fountain



Jiwoo Jung  
[jj200h@naver.com](mailto:jj200h@naver.com)

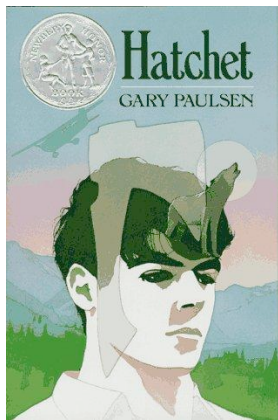




1) Inside the Outbreaks by Mark Pendergrast



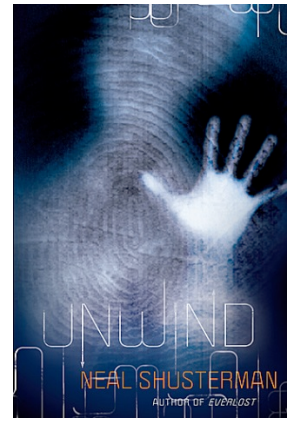
“Pendergrast traces the history of the Center for Disease Control from its beginning as a small agency to its current position as a world leader in disease research. The CDC was at the forefront of vaccine research and campaigns, identified numerous deadly diseases, and even now tracks other 'diseases' that plague humans: violence and poverty.” – Ms. Fountain



2) *Hatchet* by Gary Paulsen



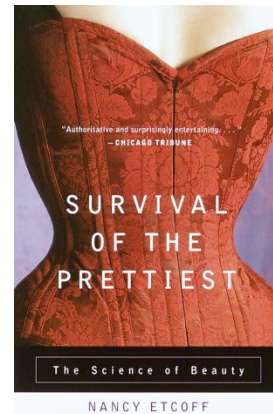
“Imagine being surviving a plane crash only to realize that to stay alive you have to survive in the wilderness by yourself. That's what happens to Brian, *Hatchet* is about Brian learning to survive in the Canadian wilderness after living in a city his whole life. Will he make it through?” – Ms. Fountain



3) *Unwind* by Neal Shusterman



“What if until you were a legal adult you could be unwound and you had no choice? Have all of your useful body parts donated until there is nothing left? *Unwind* asks us to look at what we are made of, literally. Follow three teenagers as they try to escape the system that would break them down.” – Ms. Fountain



4) *Survival of the Prettiest* by Nancy Etcoff



“What makes us attractive? Why do we think that certain features are attractive? Why do some people go to extreme lengths for 'beauty'? Dr. Nancy Etcoff explores the science and evolution behind beauty and why humans are so obsessed with it.” – Ms. Fountain



“I didn't read this book yet, but I think this book is what Korean society and people need right now. Not only Korea, but also whole world thinks that the beauty is the most important condition for happy life. It is true that it will be nice to have attractive appearance, but it's not everything.” – Summer Jiwoo Jeong

# HOW TO SURVIVE IN THE IB

## Changes in the 2015 College Admission System (Korean Universities)

Sean Lee

[gome7777@gmail.com](mailto:gome7777@gmail.com)



At the end of the year 2013, the main universities in Seoul have presented the changes made for college admission system in the impending year 2015. From what we can find out now, there are many significant changes that will greatly affect the Pre-DPs and DP-1s. Let's look at the changes that are officially decided and announced by on of the central universities.

### Yonsei University

Yonsei University, which also came out in the popular drama 'Answer 1994', is a dream university for many GAFLians. Since we are IB students we cannot apply for regular admission so we will look at changes in nonscheduled (rolling) admission.

1. **Non-scheduled regular admission will have the number students decreased by 95 and student department admission increased by 120.**

Like many other universities, the number of students that are accepted by the Yonsei University has reduced a lot which is a very bad news for us. The regular essay-writing admission reduced by 11.4% that is similar to Koryeo University that decreased by 10.17%. For the special admission, the number of students accepted has reduced no more than 26, so there is no significant change. On the other hand, the student department centered admission (which includes student department subject admission and excellent school activity admission) has increased greatly by 23.53% or 120 students.

## 2. The standard of minimum academic achievement became more intense.

For the regular admission in the 2015, the standard of minimum academic achievement became similar or little less than the priority selection's standard that accepted 70% of the applicants. In comparison to regular selection that accepted 30% of the applicants, the standard became a intense. The changed minimum academic achievement standard is higher than the standard of top main universities essay-admission.

## 3. There will be changes in the qualification of applying to the university.

Previously there were 3 types including humanities, nature and international but it has changed to 6 types including humanities, natural science, science engineering, IT technology, creativity and international course, each with different qualifications. The humanities and natural science affiliation will provide more opportunities for students attending regular high school. This is because the English related subjects' and international curriculum's completion unit has eased. But for the IT course the regular high school students need to take additional courses to fulfill the requirements whereas special-purpose high school don't need additional course. Lastly the science engineering has requirement of 10 hour completion unit for science and math related courses so there are advantages to special-purpose schools.

Looking at one example of the changes in a particular school, it is evident that there are great changes. Primarily speaking, the changes admission systems for many universities are disadvantageous to the IB students. In that sense we have to become aware of the change to become prepared and ready.



"2015년 대입정보 기본안." 대입 전형 연세대/서울대 수시 및 정시 분석. Jongro Academy, 17 Jan. 2014. Web. 24 Jan. 2014.





# Interview with Graduate Yerin Kim

-----  
Hye-Min Yi  
[hyi03plumpkin@gmail.com](mailto:hyi03plumpkin@gmail.com)

## 1. What were some difficulties you had to go through during the IB program?

Korean was difficult. Since I didn't spend a lot of time in Korea, my Korean was not that stellar. This was why I had the most trouble with my Korean class. Time management was also a big issue. At GAFL we are just given huge blocks of time (ASG) where we're supposed to figure out what to do. It was also uncomfortable since we couldn't go out freely during this time. This made doing extra-curricular activities and CAS difficult. I was also not accustomed to not having freedom. I had to plan beforehand when I would do my other extra-curricular activities. I also had to be solely responsible for my school life. Since we live in dorms, our parents are not looking over our shoulders all the time. This gives us not only freedom, but also responsibility. I personally found this responsibility to be an exciting challenge.

## 2. How did you overcome these difficulties?

Just getting through the IB program itself naturally helped me face my difficulties. IB can never be done without time management. Korean class was difficult, but it increased my Korean exponentially. Eventually I achieved a high score on my IB Korean HL exam.

## 3. Other than IB's academic studies, what else does an IB student have to focus on?

I think it's important not to forget to enjoy school life though it might be hard since there is a lot of work to do. High school only comes once. You should enjoy it while you can. So even if you're in the middle of a big pile of assignments, find some time to go outside and breathe.

## 4. What extracurricular activities did you do?

I was on the basketball team. We hosted a basketball competition and invited other schools to participate. GAFL won hands down. I love sports so my time on the basketball team was very memorable.

## 5. What should we keep in mind when doing extracurricular activities?

I personally think you should do things that you like doing. If you like what you're doing, chances are you're good at it. Extra-curricular activities start meaning a lot more when you enjoy them and you feel like you're actually getting somewhere with them.

## 6. Do you have any last words of advice?

Try not to feel too stressed out about all the competition. It will pass. Keep in mind that whatever you're doing will affect you in the future, not someone else. So live for yourself.

# The College Times



## Stanford University

### Introduction

Stanford University's ranking in the 2014 edition of Best Colleges is National Universities, 5.

Stanford University's pristine campus is located in California's Bay Area, about 30 miles from San Francisco. Stanford offers a wide range of student organizations, including the Stanford Pre-Business Association and Stanford Solar Car Project, which designs, builds and races a solar car every two years. The Stanford Cardinals are well known for the traditional "Big Game" against Cal, an annual football competition that awards the Stanford Axe—a sought-after trophy—to the victor. Stanford also has successful programs in tennis and golf. Only freshman are required to live on campus, but students are guaranteed housing for all four years and most choose to remain on campus.

Four of Stanford University's seven schools offer undergraduate and graduate coursework, and the remaining three serve as purely graduate schools. Graduate programs include the highly ranked School of Education, School of Engineering, Law School, School of Medicine and the top-ranked Graduate School of Business. Notable Stanford alumni include former U.S.

President Herbert Hoover, famed NFL quarterback John Elway, actress Sigourney Weaver and golfer Tiger Woods, who began his professional career at Stanford.

### Stanford University

450 Serra Mall  
Stanford, CA 94305-2004  
(650) 723-2300

### College Admissions Office

Montag Hall  
355 Galvez Street  
Stanford, CA 94305-6106  
Phone: (650) 723-2091  
Fax: (650) 723-6050  
E-mail: [admission@stanford.edu](mailto:admission@stanford.edu)

### International Student Contact

Website: [admission.stanford.edu/application/international/](http://admission.stanford.edu/application/international/)  
E-mail: [intl.admission@stanford.edu](mailto:intl.admission@stanford.edu)





GENERAL FACTS		ENTRANCE INFORMATION	
Website	<a href="http://www.stanford.edu">www.stanford.edu</a>	Admissions Rate	Most Selective
Amherst College	A private institution that was founded in 1885. Its setting is suburban, and the campus size is 8,180 acres. It utilizes a quarter-based academic calendar.	Average SAT Scores of Accepted Students	CR: 750 Math: 760 Writing: 750
Students : Professors	5:1	Average ACT Scores of Accepted Students	Com: 33 / Eng:N/A / Math: N/A
Acceptance Rate	6.6%	Early Decision Deadline	November 1st
Most Popular Majors	Social Sciences, Engineering, Physical Sciences, Interdisciplinary Studies, Computer and Information Sciences and Support Services	Regular Decision Deadline	January 1st
Application Fee	\$90	GPA	Minimum 3.75
Degrees Offered	Bachelor's, Master's Doctorate-professional practice, Doctorate-research/ scholarship	Tuition + Residence Fees	\$41,250+\$12,721 (2013~14)
Average Freshman Retention Rate	98%	Total Undergraduate Enrollment	7,063
4-Year Graduation Rate	80%	:)	:)

### College Evaluation

	D	D+	C-	C	C+	B-	B	B+	A-	A	A+
Academy	█										
Sports	█										
Food	█										
Dormitory	█										
Facilities	█										
Local Environment	█										
Outside-school Accommodation	█										
Parking	█										
Transportation	█										
Weather	█										

## Services Offered

- **Basic student services offered**
  - non-remedial tutoring
  - day care
  - women's center
  - health service
  - placement service
  - health insurance
- **Campus safety and security services offered**
  - 24-hour foot and vehicle patrols
  - late night transport/escort service
  - 24-hour emergency telephones
  - lighted pathways/sidewalks
  - controlled dormitory access (key, security card, etc.)
- **Career services offered**
  - on-campus job interviews
  - alumni network
  - internships
  - interest inventory
  - resume assistance
  - interview training
  - career/job search classes
- **Services for physically disabled students**
  - note-taking services
  - adaptive equipment
  - special transportation
  - reader services
  - tape recorders
  - braille services
  - special housing
  - interpreters for hearing-impaired
  - tutors

## Required documents for college admission

- Application (Common application) → Stanford University practices "Restrictive Early Action" policy, which means that early action and early decision applicants can only apply to Stanford
- High school academic record
- Stanford Supplement (Submit with Common application via online)
  - 3 essay topics (word limit: 250)
  - (1) Stanford students possess intellectual vitality. Reflect on an idea or experience that has been important to your intellectual development.
  - (2) Virtually all of Stanford's undergraduates live on campus. Write a note to your future roommate that reveals something about you or that will help your roommate – and us – know you better.

→ (3) What matters to you, and why?

- Secondary School Report
- Mid-Year School Report
- Final School Report
- International Supplement to the School Report (for only international applicants)
- SAT/ACT with Writing
- 2 SAT Subject Tests
- TOEFL/IELTS
- 2 Letters of Recommendation
- Supplementary Materials/Portfolios ([http://www.stanford.edu/dept/uga/pdf/11-12\\_Arts\\_Supplement.pdf](http://www.stanford.edu/dept/uga/pdf/11-12_Arts_Supplement.pdf))

## Requirements for college admission

- Required subjects in high school
  - English (focus on writing and literature) for 4 years
  - Mathematics (including Calculus) for 4 years
  - History and Social Science (including essay-writing) for more than 3 years
  - Science (including Biology, Chemistry, Physics) for more than 3 years
  - Foreign language for more than 3 years
- Financial aid
  - Stanford does not practice the need-blind financial aid system, which means that international students who apply for financial aid might get disadvantages on their admissions.
  - International students need to submit CSS Profile and International Student Certification of Finances in order to get financial aid until either November 15<sup>th</sup> (restrictive early action applicants) or February 15<sup>th</sup> (regular applicants).
- Academic GPA
- Standardized Test Scores
- Letters of Recommendation
- Application Essay
- Extracurricular Activities

**Erin Lee**

[erinlee905@gmail.com](mailto:erinlee905@gmail.com)  
[gromi00@naver.com](mailto:gromi00@naver.com)



# University of Pennsylvania

## Introduction:

University of Pennsylvania's ranking in the 2014 edition of Best Colleges is National Universities, 7.

The University of Pennsylvania, located in Philadelphia, was founded by Benjamin Franklin. The Penn Quakers have more than 25 NCAA Division I sports that compete in the Ivy League, and are noted for successful basketball and lacrosse teams. Penn offers housing in more than 10 College Houses, but many students live in the numerous off-campus apartments and houses available. More than 25 percent of the student body is involved in Greek life, which encompasses about 45 fraternities and sororities.

The school also offers a number of clubs and organizations, ranging from performance groups like the Latin and Ballroom dance club to student publications such as the Penn Political Review. Penn works closely with the West Philadelphia area through community service and advocacy groups.

Penn has 12 schools: Four offer undergraduate and graduate studies and eight offer only graduate studies. Penn's highly ranked graduate programs include its [Wharton School](#), [School of Education](#), [School of Engineering and Applied Sciences](#), [Law School](#) and [School of Medicine](#). Penn's other notable graduate programs include its [Design School](#) and School of Dental Medicine.

Penn, though secular, has a strong religious life with its Hillel for Jewish students, Penn Newman Catholic Center and InterVarsity Christian Fellowship. More than 2,000 students each year participate in international study programs offered in more than 70 countries around the world. Notable Penn alumni include former U.S. President William Henry Harrison, poet William Carlos Williams and businessman Donald Trump.

## University of Pennsylvania

3451 Walnut Street  
Philadelphia, PA 19104  
(215) 898-5000

## College Admissions Office

1 College Hall  
Room 1  
Philadelphia, PA 19104-6376  
Phone: (215) 898-7507  
Fax: (215) 898-9670  
E-mail: [info@admissions.upenn.edu](mailto:info@admissions.upenn.edu)

## International Student Contact

Elisabeth O'Connell,  
Director of Transfer and International Admissions,  
Phone: (215) 898-7901  
E-mail: [lizo@admissions.ugao.upenn.edu](mailto:lizo@admissions.ugao.upenn.edu)

GENERAL FACTS		ENTRANCE INFORMATION	
Website	<a href="http://www.upenn.edu">www.upenn.edu</a>	Admissions Rate	Most Selective
Amherst College	A private institution that was founded in 1740. It has a total undergraduate enrollment of 9,682. Its setting is urban, and the campus size is 302 acres. It utilizes a semester-based campus.	Average SAT Scores of Accepted Students	CR: 730 Math: 760 Writing: 750
Students : Professors	6:1	Average ACT Scores of Accepted Students	Com: 33 / Eng:N/A / Math: N/A
Acceptance Rate	12.6%	Early Decision Deadline	November 1st
Most Popular Majors	Finance, Registered Nursing/Registered Nurse, Economics, Hlstory, Psychology	Regular Decision Deadline	January 1st
Application Fee	\$65	GPA	Minimum 3.75
Degrees Offered	Certificate, Associate, Master's, Bachelor's, Doctorate-professional Practice, etc.	Tuition + Residence Fees	\$45,890+\$11,878 (2013~2014)
Average Freshman Retention Rate	97.8%	Total Undergraduate Enrollment	9,682
4-Year Graduation Rate	87%	:)	:)



**Services Offered**

- **Basic student services offered**
  - non-remedial tutoring
  - day care
  - women's center
  - health service
  - placement service
  - health insurance
- **Campus safety and security services offered**
  - 24-hour foot and vehicle patrols
  - late night transport/escort service
  - 24-hour emergency telephones
  - lighted pathways/sidewalks
  - controlled dormitory access (key, security card, etc.)
- **Career services offered**
  - on-campus job interviews
  - alumni network
  - internships
  - interest inventory
  - resume assistance
  - interview training
  - career/job search classes
- **Services for physically disabled students**
  - note-taking services
  - adaptive equipment
  - special transportation
  - reader services
  - tape recorders
  - braille services
  - special housing
  - interpreters for hearing-impaired
  - tutors
  - talking books

→ Topic: Considering both the specific undergraduate school to which you are applying and the unique aspects of the University of Pennsylvania, what do you hope to learn from and contribute to the Penn community? (about 500 words)

- Secondary School Report
- International Supplement
- SAT/ACT with Writing
- 2 SAT Subject Tests (those who submit ACT with Writing scores are not required to submit SAT Subject Test scores)
- TOEFL/IELTS
- 2 Letters of Recommendation
- Entry Document Application Form (should be submitted to Office of International Programs)
- Interview

**Requirements for college admission**

- Financial aid
  - UPenn does not practice the need-blind financial aid system, which means that international students who apply for financial aid might get disadvantages on their admissions.
  - International students need to submit CSS/PROFILE (International Student Financial Aid Application) and International Student Certification of Finances in order to get financial aid.
- Academic GPA
- Application Essay
- Character/Personal Qualities
- Rigor of secondary school record
- Standardized Test Scores
- Letters of Recommendation
- Class rank
- Extracurricular Activities

**Required documents for college admission**

- Application (Common application)
- High school academic record
- Penn Supplement (additional essay required)

**College Evaluation**

	D	D+	C-	C	C+	B-	B	B+	A-	A	A+	
Academy												
Sports												
Food												
Dormitory												
Facilities												
Local Environment												
Outside-school Accommodation												
Parking												
Transportation												
Weather												

**B  
WEBZINE  
ARTICLE  
CONTEST**

Allie Park

Erin Lee

Eric Kang



# Musical Preference as a Landmark in Life

Allie Park

It is not an uncommon sight to see people walking, driving, and exercising while listening to music. Ever since the invention of the portable music player, music has become an integral part of everyday life. People turn to music for respite and a chance to indulge in privacy. However, music does not stop at offering mental leeway to listeners. Recent studies by the University of Cambridge suggest that music serves an even greater function than simply transporting music listeners to an enclosed, private world.

According to researchers Arielle Bonneville-Roussy and Peter J. Rentfrow, music is reflective of personality and age. They assert that musical preference is influenced by psychological factors that alter with time. In order to test their theory, a Cambridge research team gathered data from more 250,000 people over a ten-year span. Test subjects were instructed to indicate which music they preferred out of 5 “empirically derived” categories: mellow, unpretentious, sophisticated, intense, and contemporary. Researchers ensured that each category was broad enough to encompass several musical genres that share certain psychological characteristics.

The research yielded results that dismissed the previously contended theory that musical preference solidifies at young adulthood. Results showed that adolescents displayed an inclination for ‘intense’ and ‘contemporary’ while young adults preferred ‘mellow’. The disparity in musical taste between the two age groups is rooted in psychological factors. Teenagers are notorious for rebelling against parents and order. Their desire for autonomy is reflected in their penchant for heavy rock metal and punk music. On the other

hand, young adults are keener on bonding with others and assimilating into an environment. The search for emotional stability is expressed in their preference for pop and rap, musical genres that are popular among the public.

The gradual change that overcomes people as they mature and age is a peripheral representation of the evolving ID. Musical preference undergoes change in a process that is parallel to the evolution of psychological desires. In this sense, music plays an important role in constituting the make-up of one’s identity at different stages in life. Bonneville-Roussy comments on the complexity that lies behind musical preference, “I find it fascinating to see how seemingly trivial behavior such as music listening relates to so many psychological aspects.”

## Bibliography:

Bonneville-Roussy, Arielle, Peter J. Rentfrow, Man K. Xu, Jeff Potter. *Music through the ages: Trends in musical engagement and preferences from adolescence through middle adulthood*. Journal of Personality and Social Psychology, 2013. Web. 31 Dec 2013.





# THE NIGHTMARE BEFORE CHRISTMAS

Erin Lee

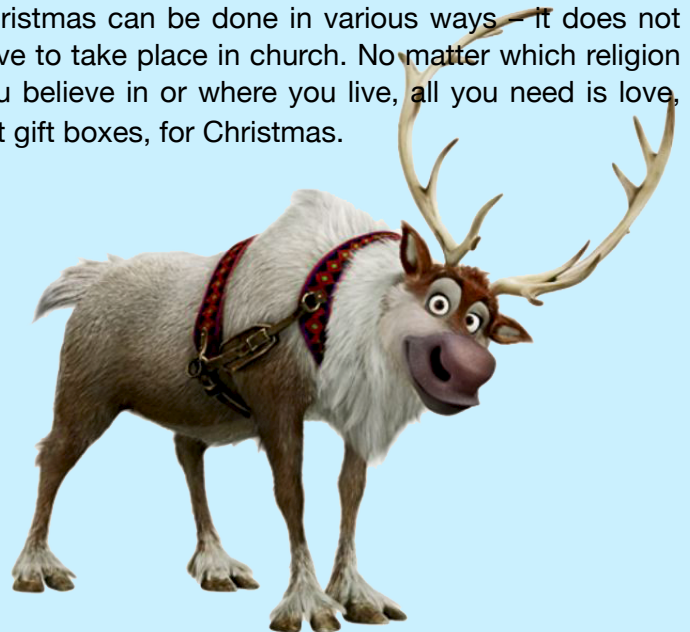
The history of Christmas began as a sacred religious holiday. Millions of people celebrate Christmas every year in different ways. Though the origin of Christmas is the birth of Jesus Christ, non-Christians also enjoy the holiday as well. However, as more and more participate, it is increasingly becoming a worldwide cultural and commercial phenomenon.

According to the research done by Groupon, a global social-commerce business, the average expenditure of South Koreans on Christmas gifts is approximately \$140<sup>2</sup>. Though such rate is less than the average in the States or Australia, we must keep in mind that the newly emerging Christmas gift-exchange culture is rarely relevant to the original spirit of this holy holiday. When we take a look at the breakdown of the \$140 spent in Korea, such amount is paid only for one's girlfriend or boyfriend. However, in the States, where the Christmas culture has originated, people buy gifts for all the family members and celebrate the end of a year altogether. Of course, a gift for girlfriend cannot be condemned. However, many Koreans exchange Christmas gift not because they want to but because they have to. It is becoming a tacit rule that expensive gifts must be exchanged between those in a relationship. Breaking this rule can be even translated to the end of the relationship; people feel obligated to buy expensive gifts as if they get punished otherwise. Christmas has added another stress factor to already tiresome lives of South Koreans.

Not only on an individual level, but also on social level, Christmas is being misinterpreted; Christmas is "used" for many conglomerates to make profits rather than to truly appreciate or celebrate. Companies produce Christmas special editions wrapped in red and green, of which the quality is not quite distinguished from the products sold in ordinary seasons. Nevertheless, these are "special" enough to stimulate people's desire of consumption on this

"special" holiday. People purchase unnecessary goods on Christmas day, lured by cunning tricks of the businesses. Manipulated by 'once in a year' marketing strategy, people become numb when it comes to buying Christmas gifts; it feels like it is never "too much" to spend money on this one special holiday in a year. Starbucks' marketing strategy exemplifies this phenomenon. Starbucks is well known for its Christmas special products including tumblers as well as Christmas coffee. The profits earned during Christmas season takes up a large portion of the entire company profits. Some stores even restrict the number of tumblers that each consumer can buy due to the excessive demand for Christmas limited edition. Lots of people fail to notice the fact that the only difference between Christmas tumblers and ordinary tumblers is the printed paper that is put inside the outer glass. Businesses, by nature, persuade people to buy, and spend more and more. In the midst of advertisements on TV and the billboards that create the norm of the society, people must be reminded that Christmas is indeed a holiday. They can choose to celebrate happily, or pass by.

"How many observe Christ's birthday! How few, His precepts!" said Benjamin Franklin. People buy gifts, like a robot operated by the orders of the businesses, without paying attention to the true meaning of the holiday. Instead of celebrating Jesus's birthday, people consider Christmas as another Valentine's Day in December. People have dates and have "nightmares", worried about gifts in order to prove their commitment in the relationship. However, it is now time to search for the true meaning of Christmas day; people should not be harassed for the nightmare before Christmas anymore. Appreciating Christmas can be done in various ways - it does not have to take place in church. No matter which religion you believe in or where you live, all you need is love, not gift boxes, for Christmas.



# The price of the demanded 'Padded Outwear' of the students is facing a rise.

Eric Kang

As the weather gets colder, the Korean students' demand to buy expensive 'Padded Outwear' has risen to an even higher level compared to the past few years. This absurd trend was first observed ten years ago and has been getting worse ever since. Unlike the students in other countries, Korean students tend to show an extreme obsession with what they wear to school. This kind of social phenomenon can be derived from their need to look noticeable in the crowd of the students wearing the same school uniforms. The students have always been trying to find out ways to look unique and their resolution was to wear padded jackets that are allowed to be worn on top of their uniforms. Some people might hastily assume that there is no harm with showing keen interest in fashion; however, the main problem behind it is the preposterous price which is the burden of the parents.

Until very recently, 'Northface padded jacket' was on the top of the students' wanted list. Northface is the brand famous for producing mountain-climbing clothes but for some reason, wearing one of these has become the prior task of the students. The prices of these particular outwears range from 250,000 won to 650,000 won and apparently depending on their price, the class of respective clothes is determined. As a result, strange observation is made among the students where they determine each other's social class within their schools by looking at how expensive their padded jackets are.

In the winter of 2013, this problem has clearly been aggravated where the students now seek for even more pricey outwear so-called 'premium padding'. This particular name designates all the expensive padded outwears that are not yet well-known to the teenagers. According to the students, 'Canada Goose' and 'Moncler' are some of the brand-examples of premium padded jackets and the minimum price of these outwears is 1,000,000 won which obviously is a big jump from that of the

Northface padded jackets. It seems that the wallets of the parents are going to get even lighter this year.

The students say that the primary reason behind their obsession with these outwears is because of the school uniform. They share this common belief that without being noticed (by wearing additional clothes on top of their uniforms), they will never be able to get popular. Although their concerns are understandable, this type of method should not be adhered. In fact, there exists so many other ways to appeal oneself. Playing sports, playing games and telling jokes are some of the many different ways to strengthen one's position within schools. A fancy outlook can only grab other students' attentions temporarily.

As a student myself, I once had an interest in this school-fashion. When I was attending my middle school, almost everyone around me owned a padded outwear and this trend had eventually enforced me to purchase one just like the others. I did not understand why the students were obsessed but my opinions did not matter. In order to fit into their society, wearing one was crucial. To illustrate how much these clothing mean to the teenagers, in my middle school, there were even students who were robbed of their padded jackets by the bullies.

If this kind of social trend continues, the clothing companies will produce more expensive padded outwears in order to earn more profits. The main consumers who are the students will be attracted to this new release urging their parents to buy them. This vicious cycle will never end unless the students realize how idle it is to be obsessed with pricey padded outwears.



# Fun Science

As a student, what are things that are quite often used while studying but you do not tend to bring it to classes? They are Post-it and correction fluid (also called liquid paper). Those are the ones that are annoying to bring, but needed desperately when you do not have them in your pencil case. Let's see how these useful stuffs work!

## How does correction fluid work?

Correction fluid was first invented by Bette Nesmith Graham. Her initial product was tempera water-based paint that can be used to correct mistakes. Then, after she discovered the recipe of making white liquid that dries quickly, she sold the recipe to Gillette Corporation for US\$47.5 million in 1979.

### Concept behind Correction Fluid

Correction fluid has to have two characteristics of being white and volatile (easy to evaporate). When white solution is painted, the solvent evaporates and only the solid residue of the solution stays on the paper. Because the solvent is volatile, unused correction fluid thickens over time easily. If it becomes too thick to use, the liquid called thinner can be added to return it to the initial liquid state.

### Chemical Composition

White colouring of the correction fluid usually contains titanium dioxide and volatile solvent which is either 1.1.1-Trichloroethane or methyl chloroform). Volatile component takes up almost fifty-percent of the correction fluid. Thinner is composed of 100% 1.1.1-Trichloroethane and like stated above, it is added to dissolve solidified titanium dioxide.

## How do Post-it's work?

Post-it is widely used at school, office and home to write notes. This convenient invention was actually the result of a failed experiment. In 1968, Spencer Silver, a scientist at 3M tried to make a strong adhesive, but instead he created reusable, pressure-sensitive adhesive. This temporary adhesive, because of its incompleteness, its inventor, Spencer Silver of 3M considered it as a failure. However, Art Fry, a scientist at 3M found the adhesive useful and further developed to make Post-it notepad.

### Concept behind the Post-it

The concept behind this re-adherable notepad is that the adhesive is glued in the form of microsphere. This microsphere particles which have average diameters of  $25\mu\text{m}$  to  $45\mu\text{m}$  helps the notepad to adhere, creating discontinuous layers.

### Chemical Composition

Re-adherable notepad's pressure sensitive adhesive is made up of microspheres particles which can be formed by the free radical polymerisation of isooctyl acrylic acid. Free radical polymerisation is also called as 'chain growth polymerisation process'. Like its name suggests, this process makes bigger chains by connecting the smaller reactive molecules together. Since the created adhesive has discontinuous layer with a long chain, it can be used for Post-it which can be both attached and detached.



---

Eunjee Hyeon

[valor74@naver.com](mailto:valor74@naver.com)





**CHIEF EDITOR: ERIN LEE**

**JOURNALISTS: JIWOO JUNG**

SEAN LEE

HYE-MIN YI

ERIN LEE

ERIC KANG

ALLIE PARK

EUNJEE HYEON

**ASSOCIATE EDITOR: SALLY OH**

**IB COMMITTEE**

**COMMUNICATION**

**DEPARTMENT:**

ERIN LEE

SEAN LEE

JIWOO JUNG

HYE-MIN YI



**GAFL**